

ALL-NEW JEEP®

GLADIATOR



Jeep



THOSE WHO REACH HIGHER
SEE FURTHER
<< RANGE OF FEATURES >>

MADE TO BE
LEGENDARY





NEW WORLDS
OPEN UP





ESSENTIALS

Every Jeep® Gladiator comes equipped with integrated LED lights in the cargo bed along with tie-down rings located at each corner. For added function, opt for the available 230-volt power outlet/400-watt converter with weatherproof cover.



PROTECTION

The all-steel bed is offered with an available Spray-In Bedliner, adding a textured and durable layer of protection. Help keep cargo secure and out of the elements with one of the Tonneau Covers available in our dedicated range.

CARGO MANAGEMENT

Organize and secure cargo via the available three embedded rails with adjustable tie-down sliders that run along the inside of the truck bed and behind the cab, allowing you to mount available Mopar® Accessories, including Bed Crossrails, Cargo/Lifestyle Carriers like a Ski and Snowboard Carrier, and more.



PLAYTIME FOR WARRIORS

ENTER THE ARENA OF THE JEEP® GLADIATOR, WITH A SELEC-TRAC® FULL-TIME 4X4 SYSTEM. GLADIATOR SPORT COMES DRESSED FOR BATTLE WITH BLACK FENDER FLARES, PREMIUM SUNRIDER SOFT TOP AND 17-INCH SILVER ALLOY WHEELS.



LET YOUR SPIRIT
GUIDE YOU



WELL EQUIPPED
FOR EVERY QUEST

COMFORT

AVAILABLE

CLASS LEADING
REAR-SEAT LEG ROOM

AVAILABLE

HEATED FRONT SEATS
AND STEERING WHEEL

AVAILABLE

DUAL-ZONE AUTOMATIC
TEMPERATURE CONTROL

STORAGE

AVAILABLE

LOCKABLE AND
REMOVABLE STORAGE
UNDER REAR SEAT

LOCKABLE BEHIND
SEAT STORAGE



DUAL-ZONE AUTOMATIC TEMPERATURE CONTROL

Constantly adjusts air temperature inside the cabin to create separate customized environments for driver and front passenger. Standard on all Gladiator models.

7-INCH DRIVER INFORMATION DISPLAY

Front and center in the gauge cluster, you'll find a wealth of scrollable vehicle in full color that you safely control via steering-wheel buttons. Available.



UCONNECT™ 4 NAV WITH 8.4-INCH DISPLAY

A large high-definition touchscreen offers smartphone integration, navigation and real-time stats with Off-Road Pages. Available.

PHONE/TEXT

Make hands-free phone calls or use your voice to send a text. Pair up to 10 Bluetooth®-enabled phones. See a visual prompt of incoming calls or texts and send an automated reply.



AN INSPIRED RIDE

AN INSPIRED RIDE RELAX AMONG THE LUXURIES INHERENT IN THE OVERLAND® BRAND, LIKE THE REFINEMENT OF AVAILABLE LEATHER TRIM, ACCENT STITCHING AND BRUSHED CHROME ACCENTS. SURROUND YOURSELF WITH TECHNOLOGY THAT INCLUDES A 7-INCH DRIVER INFORMATION DISPLAY, STANDARD UCONNECT™ 4 NAV WITH 8.4-INCH DISPLAY AND DUAL-ZONE AUTOMATIC TEMPERATURE CONTROL (SHOWN) ASSURING THE COMFORT OF DRIVER AND FRONT PASSENGER AT ALL TIMES.



INFOTAINMENT

RADIO

NAVIGATION

ENTERTAINMENT

TOUCHSCREEN CONTROLS

Easily locate your next off-road playground. Uconnect™ employs GPS Navigation for audible turn-by-turn directions, and detailed 3-D maps help ensure you arrive on time. Use Voice Command and say the complete address to get directions quickly. Available.

Thanks to the 4th generation Uconnect™ Nav and infotainment system, you can listen to your favorite playlist from your connected device or use the DAB radio for crystal clear quality, all at the press of a button. Available.

ANDROID AUTO

Bring the best of Google along with you in your Uconnect™ system. Easy touchscreen navigation and voice recognition let you access YouTube Music, get directions with Google Maps™ and ask the Google Assistant any question on the go, at any time. Available.

APPLE CARPLAY

Display your favorite iPhone® apps right on your Uconnect™ touchscreen. Access your iTunes® library, call anyone in your contacts list or just ask Siri® to help you out while you drive. Get directions, make calls and send messages, and connect to Apple Music, all without pausing your journey. Available.



CONNECTED SERVICES



NEW UCONNECT™ SERVICES

GET THE MOST OUT OF A VEHICLE THAT IS ALWAYS CONNECTED. THE NEW JEEP® RENEGADE IS EQUIPPED WITH THE LATEST UCONNECT™ SERVICES AND INTUITIVE TECHNOLOGY. PLUS, THANKS TO THE UCONNECT BOX, YOU CAN ACCESS ADVANTAGEOUS OFFERS FROM PARTNERS AND INSURANCE BENEFITS THANKS TO DRIVING DATA FROM YOUR VEHICLE. DISCOVER ALL OF ITS FUNCTIONS RIGHT AT YOUR FINGERTIPS.



Download the My Uconnect mobile app or go to the official Jeep® website to take advantage of all the services.

For more information regarding the timing and activation for each service, please refer to the official Jeep® website.





MY ASSISTANT



MY REMOTE



MY CAR



MY ALERT



MY FLEET MANAGER

MY ASSISTANT



SOS CALL

Through the built-in SOS button, contact the emergency service to receive support immediately in case of accident or under certain crash conditions.



ROADSIDE ASSISTANCE*

Contact the call center directly to receive roadside assistance through the My Uconnect mobile app, radio display, built-in Assist button in the vehicle or automatically if a major system is compromised.



CUSTOMER CARE*

Contact the call center with your questions and concerns about your vehicle through the My Uconnect mobile app, radio display and built-in Assist Button. Your car provides vehicle location and vehicle identification number.



VEHICLE HEALTH REPORT

Receive emails or notifications through the My Uconnect mobile app and web portal, you will receive information about the health and maintenance of your vehicle.

MY REMOTE



REMOTE OPERATIONS

Interact and send commands to your vehicle, like locking or unlocking the doors and controlling the vehicle's lights even when you aren't close to it through your smartwatch or My Uconnect mobile app.



VEHICLE FINDER

Visualize your vehicle's location on your smartwatch and smartphone, through the My Uconnect mobile app or web portal. You can also launch pedestrian directions from your position to the vehicle.



DRIVE ALERTS

Stay in control of your vehicle even when it is driven by another person. Receive alerts on My Uconnect mobile app or web portal for preset parameters.



AT-HOME DIGITAL ASSISTANT

Enhance your connection to your vehicle with your at-home digital assistant. Get vehicle info, search points of interest (POI) and even lock and unlock doors and control the vehicle's light.

MY CAR



VEHICLE INFO

Get real-time information on your vehicle's fuel level, tire pressure, odometer and oil life on a smartwatch, the My Uconnect mobile app or the web portal.



VEHICLE HEALTH ALERT

Receive specific push notifications about powertrain, oil, fluids, brakes, suspension, safety and lights on a smartwatch, the My Uconnect mobile app or the web portal.



IN-VEHICLE NOTIFICATIONS*

You can receive notifications about predictive maintenance and service subscriptions. For service subscriptions you can receive a call directly on vehicle's touchscreen.



THEFT ALARM NOTIFICATION

Receive notifications via SMS, My Uconnect mobile app or web portal of any suspected theft, unauthorized movement or security breaches related to your vehicle.



STOLEN VEHICLE ASSISTANCE

Contact the operations center immediately if your vehicle has been stolen. Once the theft is confirmed with a police report security features including vehicle tracking will be activated.



FLEET MANAGEMENT PORTAL

Fleet Management Portal is the solution for managing your fleet ensuring absolute control over the activities, service status, maintenance and assistance of each vehicle.



TECH SUPPORT



7-INCH DRIVER
INFORMATION DISPLAY

AVAILABLE

AVAILABLE
UCONNECT™ 4 NAV WITH
8.4-INCH TOUCHSCREEN



U.S. Uconnect™ screen shown.

PARKVIEW® REAR
BACK-UP CAMERA



AVAILABLE
REMOVABLE
BLUETOOTH® SPEAKER



FORWARD-FACING
OFF-ROAD TRAILCAM
AVAILABLE



ADAPTIVE
CRUISE CONTROL
WITH FULL-STOP



BLIND SPOT
MONITORING
AND REAR
CROSS-PATH
DETECTION



PARKSENSE®
REAR PARK
ASSIST SYSTEM



SAFETY + SECURITY

JEEP® GLADIATOR ENVELOPS YOU WITH MORE THAN 70 STANDARD AND AVAILABLE SAFETY & SECURITY FEATURES. REMAIN CONFIDENT DRIVING IN ALL WEATHER CONDITIONS.

BLIND SPOT
MONITORING AND
REAR CROSS-PATH
DETECTION

Maintain a safe perimeter with the help of these sensor systems. Chimes and illuminated icons notify you when side or rear blind spots are encroached. Available.

PARKVIEW® REAR
BACK-UP CAMERA

When the vehicle is in reverse, the Uconnect™ screen displays a wide-angle view of what's immediately behind your vehicle. On-screen dynamic grid lines help you see your back-up path. Standard.

PARKSENSE® FRONT
& REAR PARK ASSIST
SYSTEM

Works in tandem with ParkView® Rear Back-Up Camera and uses sensors to bring previously hidden objects to your attention with an audible warning so you have time to react. Standard.

ELECTRONIC
STABILITY CONTROL
(ESC)

A vehicle-wide network of safety sensors helps maintain vehicle control, providing instant aid should it detect you veering off your intended path. ESC coordinates a range of safety systems, sending them into action when needed. Standard.

NEXT-GENERATION
AIRBAGS

When a crash is detected airbags are deployed, including supplemental front-seat-mounted side airbags, nearly instantaneously. They provide occupant protection that matches the crash severity. Standard.

AUTOMATIC
HIGH BEAM

Headlamp system adjusts to oncoming traffic to deliver maximum lighting. Available.

TRAILER SWAY
CONTROL (TSC)

Crosswinds and traffic hold no sway over you and your payload. As part of ESC, TSC helps keep you and what you tow safely on course. Standard.

FORWARD COLLISION
WARNING PLUS

Uses radar and sensors to video-detect when you may be approaching another vehicle too rapidly. An audible and visual alert is given, or the system assists the driver in mitigating a potential collision. Available.

ADAPTIVE CRUISE
CONTROL WITH
FULL-STOP

Adaptive Cruise Control with Full Stop automatically adjusts your driving speed to maintain a pre-selected distance from the vehicle ahead. It will bring your vehicle to a complete stop if necessary, all without driver input. Available.

EMERGENCY HELP

In the case of an emergency, Uconnect™ Services puts help at your fingertips. Easily place an SOS emergency call by simply pressing the red SOS hard button, which will immediately put you in contact with emergency services and share your vehicle's last known location. In the event of an incident and airbags are deployed, the My Assistant system will automatically establish a call with emergency services, without any driver intervention. The last known vehicle coordinates will be sent and first responders will be dispatched if necessary.

SEE AND HEAR EVEN MORE

JEEP® GLADIATOR SUPPORTS YOUR "DO EVERYTHING" SPIRIT WITH AVAILABLE FRONT AND REAR CAMERAS, AN AVAILABLE REMOVABLE SPEAKER, AND FULL-COLOR DISPLAYS FRONT AND CENTER. WITH SO MANY ADVANCED FEATURES, THE GLADIATOR MAKES IT EASY TO STAY INFORMED AND ENTERTAINED.

MADE FOR
MASTERY



**ADVENTURE
READY**

The power to conquer all worlds while bringing along more tools and tackle has arrived. This one-of-a-kind, 100% Jeep® truck is outfitted with an outstanding list of capability features.

**SELEC-SPEED®
CONTROL**

During off-road maneuvers, Selec-Speed® Control helps drivers maintain a targeted speed of 1 to 8 km/h while traveling in 4-L.O. A highly technical Off-Road cruise control, so drivers are not required to control the throttle or the brake and can better focus on their line.

**SELECTABLE
TIRE FILL ALERT**

For off-road driving situations, it's advisable to reduce vehicle tire pressure in order to improve traction on surfaces such as sand or rock. The Selectable Tire Fill Alert (STFA) system makes tire inflation or deflation more convenient by providing an audible notification when the desired pressure is reached.

**HILL START
ASSIST**

Travel uphill with confidence, knowing this standard feature will help keep Jeep® Gladiator from rolling backward when starting on an uphill gradient.



FORWARD-FACING
OFF-ROAD TRAILCAM

VENTED HOOD

32"
ALL-TERRAIN TIRES

DANA® 210M HEADY
DUTY 44 FRONT AXLE

TRANSMISSION
SKID PLATE

TRANSFER
CASE SKID
PLATE

FUEL & UREA
TANKS SKID
PLATES

SIDE STEPS

TRAC-LOK®
LIMITED-SLIP REAR
DIFFERENTIAL

REAR
TOW HOOK

DANA® 220M
HEADY DUTY
44 REAR AXLE

LOW RANGE GEARS

2.72:1 SELEC-TRAC® FULL-TIME
4X4 SYSTEM

DISCOVERY MODE

REMOVABLE DOORS

The side doors on Jeep® Gladiator are made of lightweight aluminum, which makes them extremely easy to remove. A special tool is provided that you'll use to remove the door hinge pins. A built-in handle makes them easy to remove, and carry too. Now, you're truly experiencing freedom.

FREEDOM TOP® 3-PIECE

Modular lightweight hardtop and easy to take off, you can remove just the two front panels or all three sections. The rear glass incorporates a rear defroster and manual-sliding window. Also comes with a Freedom Panel storage bag and can be optioned with insulating headliner panels. Available in black on Sport or in body-color on Overland®.

PREMIUM SUNRIDER® SOFT TOP

Choose your mood: remove just the rear window to retain shade from the sun, flip back the upper section for a fully open roof, or remove the entire top altogether. With a spring-assisted and zipperless design, Sunrider® allows you to become one with the sun or stars. Crafted from heavy-duty waterproof cloth material and available in black. Premium fabric that is thick, rich in color and easy to clean.

FOLDING WINDSHIELD

Feel the wind on your face and get a clearer view of the trail by removing just four bolts, folding the windshield down and securing it with straps available from Mopar®.



NO OTHER TRUCK SHEDS ITS INHIBITIONS LIKE JEEP® GLADIATOR. IT HAS AN IMPRESSIVE LIST OF FEATURES THAT BRING THE OUTSIDE IN, PROVING THAT THIS PICKUP TRUCK TRULY IS OPEN FOR ANYTHING.



TOPTIONS

Like no other truck out there, this one expands your world and lets the sunshine in. Go with the available lightweight, easy-to-remove Freedom Top® 3-Piece Modular Hardtop or the Premium Sunrider® Soft Top with its zipperless secure closure that easily glides to open. The standard Premium Sunrider Soft Top has outstanding durability and sound dampening. Or get the best of both worlds with the Dual Top group, making sure you have the perfect covering for every season.

FRESH-AIR FREEDOM

THE ONLY OPEN-AIR
PICKUP TRUCK IN
THE INDUSTRY

PREMIUM SUNRIDER
SOFT TOP

AVAILABLE

FREEDOM TOP® PIECE
MODULAR HARDTOP

REMOVABLE
DOORS

FOLDING
WINDSHIELD

PREMIUM
SUNRIDER®
SOFT TOP



AVAILABLE
FREEDOM TOP®
3-PIECE
MODULAR HARDTOP



AVAILABLE
FREEDOM TOP®
3-PIECE
MODULAR HARDTOP



WHEN THINGS GET
TECHNICAL

CAPABILITY

SELEC-TRAC® FULL-TIME 4X4 SYSTEM

For off-road and all-weather capability, this full-time system divides torque between front and rear axles for tough traction. The transfer case shifts smoothly. For serious rock-crawling, its 2.72:1 low range ensures confidence. Standard.

HILL START ASSIST

Works to prevent Gladiator from rolling when starting on an uphill gradient. Standard.

UNDER ARMOR

Underbody skid plates for the transmission, transfer case and fuel and urea tanks, made from lightweight high-strength steel, protect the underbody. Standard.

SELEC-SPEED® CONTROL

Manages vehicle speeds of 1 to 8 kph in 4-10 while traversing off-road without requiring the driver to control the throttle or the brake, allowing the driver to focus on steering the vehicle in off-road situations. Standard.

TOW HOOK

Every Gladiator gets a black rear tow hook in.

TRAIL RATED®

Every Gladiator truck rolls off the line with the goods to roll over just about any terrain you may encounter. Each one carries the Trail Rated® designation as proof of rigorous design specs and testing.

Off Road Pages



OFF-ROAD PAGES

Access real-time performance data and in-depth diagnostics. See how the Jeep® Gladiator is performing during challenging situations. Stats include data on pitch/roll angles, transfer case, coolant and oil temps, and much more. Available.

NEW! FORWARD-FACING OFF-ROAD TRAILCAM

See what lies directly ahead of your vehicle with this front-facing camera. The image displays dynamic tire path lines on your radio screen, helping to navigate bolder boulders in time to react. A washing nozzle helps keep the lens clean and the view clear. Available.



SUPER STRUCTURE



STRENGTH

BODY ARMOR

HIGH-STRENGTH
STEEL FRAME

DANA® 44
SOLID AXLES

5-LINK COIL SPRING
REAR SUSPENSION

LARGE 330MM FRONT,
342MM REAR BRAKE DISKS

SAFETY & SECURITY

OVER 70 STANDARD AND AVAILABLE
SAFETY & SECURITY FEATURES

SAFETY CAGE WITH
SIDE-GUARD DOOR BEAMS

AVAILABLE

MULTIPLE ACTIVE
SAFETY SYSTEMS

ENHANCED ACCIDENT
RESPONSE SYSTEM (EARS)

TOWING + DRIVETRAIN

LET'S BE HONEST... SOME FUN THINGS CAN'T FIT IN ANY TRUCK BED. SO PUT WHEELS ON THEM, OR UNDER THEM, AND TOW UP TO 2,722 KG WITH STYLE AND CONFIDENCE IN A MADE-TO-PULL GLADIATOR TRUCK.

PARKVIEW® REAR BACK-UP CAMERA

Helps you align your hitch and see what you're doing while hooking up a trailer. You can also keep an eye on anything in tow while in motion. Standard.

TRAILER SWAY CONTROL (TSC)

When you're towing valuable toys, it's critical to keep things under control. TSC helps improve handling should crosswinds or traffic become challenging. The system continuously monitors vehicle movement and adjusts brake pressure to individual wheels until you're moving safely forward once again. Standard.



3.0 DIESEL V6 ENGINE

The Jeep® Gladiator uses the premium 3.0L V6 Multijet Diesel engine.

- Increased performance of 264 hp and 600 Nm.
- New injector nozzles delivering up to 2000 bar fuel pressure from common rail fuel system capable of multiple injection events.
- Variable Geometry Turbocharger (VGT) for improved acceleration performance.
- Euro 6d-Final emission homologation thanks to the use of high-pressure and low-pressure EGR systems.

REMOTE PROXIMITY ENTRY

Keep the key fob in your pocket, and you can simply open the door, get comfortably seated with your foot on the brake, press the Start button and head out. Available.

8-SPEED AUTOMATIC TRANSMISSION

The launch ratios for all eight gears have been optimized, tuning this 8-speed transmission to the exact structure, size and weight of your Jeep® Gladiator. Advanced software adjusts performance on the fly, based on variables such as temperature, cornering, hill grades and full-time 4WD gears. Smooth and virtually seamless shifts, both up and down, deliver a consistently smooth ride. Standard.

WEATHERPROOF PUSH-BUTTON START

The standard push-to-start button is protected by a water-resistant shield, so you're able to start up and head out even if the weather outside accidentally comes inside.





ALL-SEASON PASS TO
FREEDOM

<< LEGENDARY JEEP® 4X4
PERFORMANCE ALL-YEAR ROUND >>

**COLD WEATHER
GROUP**

Outsmart low temps and chilly nights with this available group of essentials that includes a climate control system initiation, heated front seats with three levels of warmth and a heated steering wheel. Available





UTILITY MODE

FUNCTIONAL

AVAILABLE

AVAILABLE

AVAILABLE

AVAILABLE

UP TO 613 KG PAYLOAD

3-POSITION
TAILGATE

SPRAY-IN
BEDLINER

CARGO GROUP WITH
TRAIL RAIL™ SYSTEM

FULL RANGE OF
Tonneau Covers

PARKVIEW® REAR BACK-UP CAMERA
WITH TRAILER HITCH ZOOM

VERSATILE STORAGE
COMPARTMENTS

TRAILER
SWAY CONTROL

UP TO 2722 KG TOWING CAPACITY

TURN ADVENTURE ON WITH MOPAR®

The untamable nature of Jeep® Gladiator can only be matched by the wide range of Authentic Accessories from Mopar®. Experience and live every adventure to the fullest with extras that fit perfectly and are easy to install thanks

to collaboration that began with your vehicle being built. Feel the air of freedom like never before and rest assured that with Mopar® you have everything you need to dominate the trail.

EXTERIOR PERSONALIZATION

Satin black grille, hood latch, rock rails.

FUNCTIONAL INTERIORS

Grab handles, storage kit multipurpose bags.

HIGH QUALITY ERGONOMIC SEATS

Katzkin leather seats.

CARGO SYSTEMS FOR WORK & LEISURE

Cross rails, bike carrier, storage management system.

WORK IN PROGRESS



Jeep
THERE'S ONLY ONE

MOPAR
At your service

Image for display purposes only; accessories can be purchased depending on markets.

SPORT



SPORT

EXTERIOR

- Full LED Headlamps, fog lamps and tail lamps
- Black fender flares
- Performance hood with a center scoop
- Full-frame metal removable doors
- 17" aluminum wheels with A/T tires
- Premium Black Sunrider® Soft Top
- Rear tow hook
- Skid plates for fuel tank, transfer case and transmission

INTERIOR

- Dual zone auto air conditioning
- Cloth seats
- Silver Platinum dash mid-panel
- Leather wrapped steering wheel
- Front and rear floor mats
- Wash-out interior with removable carpet
- Rubberized radio screen protection
- Rear underseat storage
- Lockable behind rear seat storage
- LED interior lighting

CAPABILITY

- 3.0L V6 Multijet engine
- 8-speed automatic transmission
- Selec-Trac® Full Time 2.72:1 4x4 system
- 3.73 rear axle ratio
- Trac-Lok® limited-slip rear differential
- Heavy duty Dana® 44 axles

FUNCTIONALITY

- Front and rear parking sensors
- Full-size spare tire
- 1,53-meter steel box with 4 tie-downs

- Damped 3-position tailgate
- LED box lights
- Keyless push-button start
- Electrochromic rear-view mirror with dusk sensor
- TORX® tool kit for top/door removal
- Power heated exterior mirrors
- Automatic headlamps

TECHNOLOGY & SAFETY

- Uconnect™ with 7-inch touchscreen infotainment system with DAB+ radio
- Apple CarPlay and Android Auto compatibility
- Keyless push-button start
- Cruise control
- ParkView® Rear Back-Up Camera with dynamic gridlines
- 8-speaker sound system with overhead sound bar
- 3.5" TFT instrument cluster display
- Steering-wheel-mounted audio controls
- Tire pressure monitoring display
- Electronic Stability Control (ESC) and Trailer Sway Control (TSC)
- Hill Start Assist (HSA) and Electronic Roll Mitigation (ERM)
- Selectable tire fill alert
- Selec Speed off-road cruise control
- E-Call
- Advanced multistage driver and front-passenger air bags
- Supplemental front-seat-mounted side air bags



OVERLAND®

All Sport features, plus:

EXTERIOR

- 18-inch aluminum polished and painted Granite Crystal wheels with A/S tires
- Side steps
- Body-color Hardtop
- Body-color fender flares
- Deep-tint sunscreen windows
- Front bumper with silver appliques
- Silver grille inserts
- Overland® badge

INTERIOR

- Cloth seats with Overland® logo
- Grillz dash mid-panel
- Premium-wrapped upper dash with decorative stitch
- Premium-wrapped dash grab handle

FUNCTIONALITY

- Spray-In Bedliner

TECHNOLOGY & SAFETY

- Uconnect™ 8.4" NAV touch-screen Infotainment System with DAB+ Radio
- Apple CarPlay and Android Auto compatibility
- 552W 9-speaker all-weather Alpine Premium Audio System with subwoofer
- 7" full-color TFT instrument cluster display

SPORT

CLOTH

with Peak embossment, tonal stitching and Silver Platinum-painted mid-bolster

BLACK



HERITAGE
TAN



BLACK



HERITAGE
TAN



CLOTH

with Peak embossment, tonal stitching, embroidered Overland® logo and Grillz-painted mid-bolster



BLACK



DARK SADDLE



**MCKINLEY
LEATHER-TRIMMED**

with embroidered Overland® logo, accent stitching and Monaco-wrapped mid-bolster



CURB APPEAL

This Gladiator Overland® truck earns second glances with exclusive 18" alloy wheels and body- color fender flares, side steps, bright grille and bumper accents. The body-color Freedom Top® 3-Piece Modular Hardtop comes standard in Europe, so cruise the summer night in coordinated style.

WHEELS

SPORT



17 INCH



17 INCH

17 INCH STEEL LOW - SILVER - STANDARD

17 INCH STEEL LOW - GLOSS BLACK - OPTIONAL

18 INCH ALUMINUM POLISHED AND PAINTED
GRANITE CRYSTAL - STANDARD

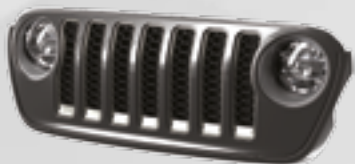


18 INCH

COLORS



Firecracker Red



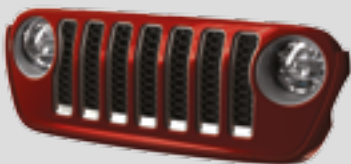
Black



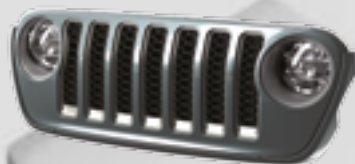
Bright White



Hydro Blue



Snazzberry



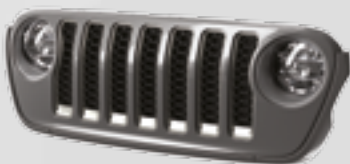
Granite Crystal Metallic



Billet Silver Metallic



Sarge Green



Sting-Gray

SPORT / OVERLAND

Chassis Body on frame

Transmission type 8-speed ATX 4WD

Traction system 4x4

Transfer Case Selec-Trac® Full Time 2.72:1

Length (mm) 5591

Width (mm) 1894

Height with hard top (mm) 1843

Height with soft top (mm) 1905

Wheelbase (mm) 3488

Turning diameter (m) 13,7

Steering turns (lock to lock) 3,24

Approach/Departure/Break over angle
41/25/18,5

Max ground clearance (mm) 253

Trail rating Yes

Water fording (mm/kmph) 760/8

Seating capacity 5

Box length, tailgate closed [mm] 1531

Box length, tailgate open [mm] 2067

Cargo width [mm] 1442

Distance between wheelhouses [mm] 1137

Bed inside height [mm] 445

Fuel tank capacity (l) 72

UREA tank capacity (l) 19,5

Front brakes vented disc 330x28mm

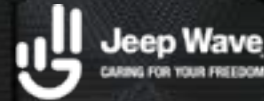
Rear brakes solid disc 342x14 mm

Front axle Dana® M210 HD Axle

Rear axle Dana® M220 HD Axle

Fuel consumption Jeep® Gladiator petrol and diesel range (l/100 km): 9.8 - 9.5; CO₂ emission (g/km): 256 - 248. Type approval values determined on the basis of the WLTP combined cycle. Values updated as of 30th November 2020, and indicated for comparative purposes.

JOIN JEEP WAVE®.
A WORLD OF BENEFITS AWAITS YOU.



JEOP WAVE® is the new exclusive membership program designed to mark the 80th Anniversary of the Jeep® Brand and offer Jeep® owners the best care and services. Jeep Wave® membership entitles you to a list of perks and advantages that are automatically activated when you buy a new model from the 2021 lineup.

All this to enhance your exclusive Jeep® experience.



DEDICATED CUSTOMER CARE

In addition to the 24/7 roadside assistance, you can count on the new dedicated customer care Monday through Friday from 8 am to 7 pm. A specifically trained support agent is ready to assist you and answer all questions regarding your Jeep®. You can contact our customer care team through a toll-free number or using the live chat in your Jeep Wave® account.

VIP PASS

Jeep Wave® gives you the opportunity to attend private brand events. Enjoy a world of special offers and discounts and dedicated access to selected events featuring Jeep® and its partners.

2 YEARS OF SCHEDULED MAINTENANCE INCLUDED

With your new Jeep®, purchase you receive complimentary maintenance at authorized Jeep® service centers for the first 24 months, including the first two regular routine checks performed by certified Jeep® technicians.

All services are available at any authorized Jeep® Dealer.

DIRECT ACCESS ON E-STORE MOPAR®

Perks continue on the Mopar® eCommerce platform where you can find original parts, accessories and a wide selection of services for your vehicle.

TRIM	SPORT	OVERLAND®
	3.0-liter V6 MultiJet	
Emission Compliance	Euro 6d-Final	
Fuel	Diesel	
Power (HP)	264	
Torque (Nm)	600	
WLTP emission CO ₂ (g/km) Combined	249 - 254	248 - 256
Fuel consumption (L/100km) Combined	9,5 - 9,7	9,5 - 9,8
Performance (0-100 Km/h) (sec)	8,6	
Top Speed (km/h)	177	

The indicated value of CO₂ and fuel consumption refers to the versions of the vehicle with the highest and the lowest values. Those values may change with the subsequent configuration depending on equipment selected and/or size of tires selected.



Jeep® is a registered trademark of FCA US LLC.
74-383-2008

The background of the entire page is a dark, textured surface composed of a repeating pattern of hexagons, resembling a honeycomb or carbon fiber structure. The hexagons are slightly recessed, creating a 3D effect with subtle highlights and shadows. In the center of the image, the word "Jeep" is written in a bold, white, sans-serif font. A small registered trademark symbol (®) is located at the bottom right of the word.

Jeep®

This brochure is a publication of FCA. All product illustrations and specifications are based upon current information at the time of publication approval. FCA reserves the right to make changes from time to time, without notice or obligation, in prices, specifications, colours, materials, and to change or discontinue models, which are considered necessary to the purpose of product improvement or for reasons of design and or marketing. The images are purely indicative.

Jeep® is a registered trademark of FCA US LLC.